



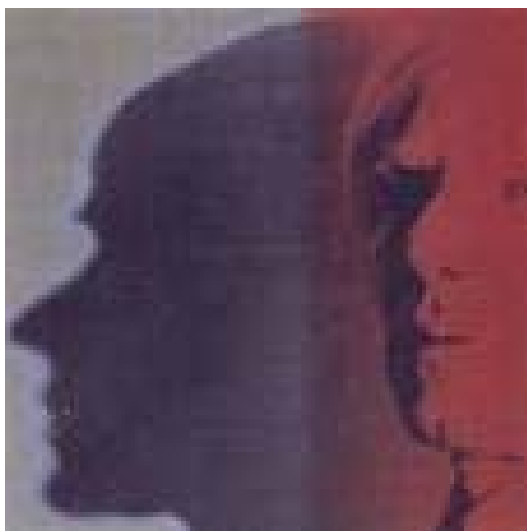
FOR IMMEDIATE RELEASE

September 24, 2009

FOR MORE INFORMATION:

Renee' B. Payton, Marketing Director
(225) 389-7206; renee@lsu.edu

***Of People and Places: Contemporary Works from the JPMorgan Chase
Art Collection to celebrate museum's 50th anniversary
November 15, 2009 – February 14, 2010***



BATON ROUGE, La. - Famous characters *Mickey Mouse*, *Superman*, and *Santa Claus*, various people, and intriguing places – all fascinating and diverse subjects from the LSU Museum of Art's exhibition "Of People and Places: Contemporary Works from the JPMorgan Chase Art Collection."

On November 15, 2009, the LSU Museum of Art will open "Of People and Places," highlighting a stunning selection of JPMorgan Chase's global art collection. Featuring art from 1963 to the present, the exhibit contains 42 paintings, works on paper and sculptures created by 19 well-established artists, as well as emerging artists who are rapidly gaining international attention. "Of People and Places" questions who we are as individuals and as communities, and what our relationship is with our changing environment – all critical issues in the world today, regardless of social and cultural geography.

Page 2
People and Places

Highlights from the exhibition include: nine silk screens by Andy Warhol, known for his portraits of iconic American products; two film still photographs by Cindy Sherman, best known for her conceptual photographs; a photo titled “Teenage Couple on Hudson Street, New York City” by Diane Arbus, who often captured images of people living on the edges of society; a large drawing by Latvia-born Vija Celmins; and a video installation by Saudi-Arabian artist Muhammed Kazem.

People and places are major themes in the Art Collection of JPMorgan Chase & Co, and have been addressed by artists since the dawn of civilization. The contemporary artists displayed in “Of People and Places” continue to engage with these topics across a diverse range of styles and techniques. Each of these 19 artists approaches the human body and its environment with highly individual sensibilities, yet their diversity creates a broader world view.

“This exhibit explores traditional themes of the human figure, landscape and environment in works that are innovative and inspiring,” said Lisa Erf, director of the JPMorgan Chase Art Collection. “They are contemporary highlights from a collection that originated 50 years ago as a pioneering concept in corporate culture: to use museum-quality art not just as decoration, but to create a thought-provoking, stimulating environment.”

“This exhibition previews a larger survey to celebrate the JPMorgan Chase Art Collection’s 50th Anniversary in 2009. Their anniversary coincides with the LSU Museum of Art’s 50th Anniversary and LSU’s sesquicentennial,” said Tom Livesay, director of the LSU Museum of Art. “What a better way to celebrate the anniversary of these organizations than through an exhibition that promotes expression and celebrates diversity?”

“Of People and Places” is on display from November 15, 2009 through February 14, 2010.

XXXX