

arttalk



3 FEATURE
Endowment Society April Event

4+ EXHIBITIONS
Beyond Black: Ed Clark, Eugene Martin and John T. Scott

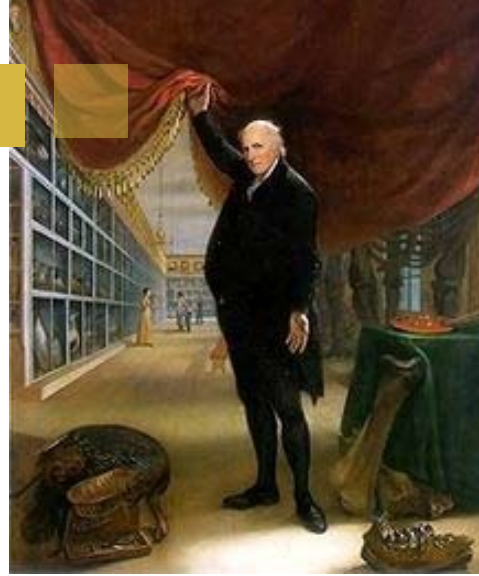
7 VOLUNTEERS

8+ CALENDAR
Events, Talks, and Films

The 10th
INTERNATIONAL SHOEBOX
SCULPTURE EXHIBITION
Opening May 29, 2011

A large, teal-colored graphic with a white border and a scalloped edge is positioned in the bottom right corner. It contains the text "The 10th INTERNATIONAL SHOEBOX SCULPTURE EXHIBITION Opening May 29, 2011" in white, bold, sans-serif font.

Director's Message



THERE ARE A NUMBER OF REMARKABLE PAINTINGS AND WORKS OF ART ON DISPLAY AT THE LSU MUSEUM OF ART, MANY OF WHICH WERE FEATURED IN THE RECENTLY PUBLISHED "TREASURES OF LSU", EDITED BY DR. LAURA LINDSAY. One of my favorite painters, however, was missed—glossed over in

the crush of so many great artists in the collections. Some of this favoritism on my part is, admittedly, because of the artist's father and the fact that he was the first museum professional in America.

Charles Willson Peale opened America's first museum in Philadelphia in July 1786. To say that he struggled is a given. He sold subscriptions (what we would recognize today as memberships), sought federal and state funding, pursued collections, and—oh, yes—did a bit of painting. In his most famous painting, *The Artist in his Museum* (1822), we see him, white-haired and fit at the age of 81, lifting a curtain

to welcome us into the marvels of his museum, a long gallery lined with vitrines containing stuffed birds. In the foreground is a wild turkey, which his friend Ben Franklin thought should replace the bald eagle as the national emblem. On the right are a femur and mandible from the fossil (discovered in New York in 1801) that had become Peale's most remarkable excavation. Further back in the painting we see his original claim to fame, his palette and brushes. Peale not only collected furiously, but he created as well. The majority of artworks in his museum were created either by himself or his offspring.

In all, Peale fathered seventeen children, six of which survived to adulthood. In an effort to pass along a creative and artistic gene, he gave them names such as Rembrandt, Raphael, Titan, Rubens, Angleia, Sophonisba, Auguissola, and (possibly running out of artists that he admired) Titan II. Rembrandt Peale and others in the family also named their offspring after notable artists.

It is the work of Rembrandt Peale that you can enjoy at the LSU Museum of Art, and his *Governor John Hoskins Stone of Maryland* (1797). As an adult, Rembrandt Peale opened a museum of his own just down the road from Philadelphia in Baltimore, often filling the galleries with his own work. The portrait of Governor Stone is worth studying. We see the governor dressed in military garb (he had served as a colonel during the Revolution), but tellingly, clutching a book of Maryland law to emphasize his real interests and his belief in the rights given to states. Further back, behind his right elbow, are books on the U.S. Constitution and federal law. Come see the Peale painting for yourself. It is one of my favorites, but I suspect you will have your own.

Thomas A. Livesay
Executive Director
LSU Museum of Art

TOP LEFT TO RIGHT: REMBRANDT PEALE *Governor John Hoskins Stone of Maryland*, 1797. Oil on canvas. Anonymous Donor's Purchase Fund, 60.13. **CHARLES WILLSON PEALE** *The Artist in His Museum*, 1822 Oil on canvas. Pennsylvania Academy of the Fine Arts, Philadelphia

"Charles Willson Peale opened America's first museum in Philadelphia in July 1786. To say that he struggled is a given"

COVER IMAGE: BEYOND BLACK ED CLARK, *Louisiana Red*, 2004. Acrylic on canvas. On loan from the G.R. N'Namdi Gallery.



Feature

Endowment Society April Event

On April 14, the museum will host a 'New Acquisitions' party for Endowment Society members. Endowment Society members have built up an endowment for purchasing new works of art for the museum, and since 2008 we have been able to spend the earnings of that endowment. Members will have the opportunity to vote on works of art chosen by the museum as potential additions to the permanent collection. This year's possible acquisitions include artworks that fill a void in the museum's collection, such as photography and contemporary glass. It's a fun evening with cocktails and hors d'oeuvres and a chance for Endowment Society members to have a say in the future of the collection. It's also our way of thanking them for their continued commitment to the LSU Museum of Art.

For more information about this event, or about becoming a member of the Endowment Society, please contact Melissa Daly at 225-389-7212; mdaly2@lsu.edu.



ABOVE:
LIBBY JOHNSON
Sanctuary, 1982 Oil on canvas Purchased with funds from the Friends of LSU Museum of Art Endowment, 2010.6

RIGHT:
JONATHAN PELLITTERI
Device for Looking In, 2009 Steel, wood, thread, lenses Purchased with funds from the Friends of LSU Museum of Art Endowment, 2010.6



Ask the Director

Offering advice in the visual arts since 2009

Q. "I read about some museums selling a piece of art from their collections. Isn't this against the rules?"
Concerned – Baton Rouge

A. Dear *Concerned*: Museums are very careful about removing works of art—or other items—from their collections, and it occurs only rarely. The LSU Museum of Art adheres to strict guidelines regarding the removal of work from its care. This process, called deaccessioning, can also be viewed as a responsible action by the museum as it seeks to refine its collections. Reasons for deaccessioning include: works of art that are outside the mission of the museum; material that does not support the research, education, or exhibition uses of the museum; duplication; lack of clear title; and several other items.

Whenever possible, the Museum takes great care to notify the original donor of the item of its deaccessioning.

Possible outcomes for a deaccessioned work include: transferring or trading the work of art to another museum with similar collections, in order to keep it in the public arena; transferring the item to another museum within the LSU system; or transferring the work to the Museum's own education collections. Selling it is usually the final option.

If the work is sold at public auction, the Museum follows ethical guidelines established by the Association of Art Museum Directors (AAMD), which require that funds from the sale be directly applied to the purchase of collections. Whenever possible, the original donor's name would follow the purchase of the new work. An example of this might be the deaccessioning of several Boehm birds, with the funds raised by their sale then used to purchase an Audubon print. The original donor of the Boehm porcelain would be credited with the new purchase of the Audubon.

If you would like an electronic copy of the Collections Management Policy that contains these guidelines, please let me know at tlivesay@lsu.edu.

Thomas A. Livesay
Executive Director

Send your questions in the visual arts to: Director, LSU Museum of Art, 100 Lafayette Street, Baton Rouge, LA 70801.

Not receiving e-mails about LSU Museum of Art upcoming events and promotions? Contact Renee' B. Payton at 225-389-7206 or renee@lsu.edu.

beyond black

Ed Clark. Eugene Martin. John T. Scott.

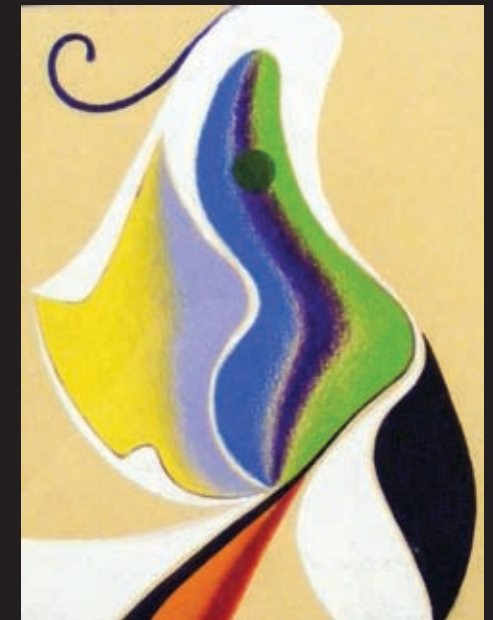
January 30 - May 8, 2011

Modern artists have been studied by numerous scholars and art institutions for decades, but the contributions of African-American abstract artists have been widely overlooked—specifically those from, or working in, the South. *Beyond Black* proudly presents a selection of works by Ed Clark, Eugene Martin, and John T. Scott, three African-American artists who rose to prominence in Louisiana or worked in the state for extended periods of time. While overlooked in their time, these prolific artists tested the language of abstract art and devoted their careers to exploring the forms, methods, and styles of the movement.

The works of Clark, Martin, and Scott are uniquely linked to one another through their innovative artistic approaches and their unquenchable desire to create as a definition of self-identity. They dedicated themselves to experimentation of structure, style, and materials. From Clark's gestural brush-stroke paintings, to Martin's vivid biomorphic mixed-media canvases, to the vibrantly colored three-dimensional work of Scott, *Beyond Black* highlights a selection of works by artists who worked in the tradition of free-form abstraction since its modernization in the 1940s and 1950s.

This exceptional exhibition is the LSU Museum of Art's first to recognize the contributions of Louisiana's African-American abstract artists. We have selected works specifically by Ed Clark, Eugene Martin, and John T. Scott not only to illustrate the historical significance of African-American abstractionists, but also to represent the branch of this movement that has roots in Louisiana.

It is impossible to encompass the revolutionary movement of American abstraction without the works of these three artists. Their vibrant works reveal a vision that persisted through intolerance and proudly reflects a uniquely American art.



The LSU Museum of Art is proud to partner with the New Orleans African-American Museum in Tremé in programming and events, and as a venue to showcase additional paintings by Eugene Martin. The Museum also proudly partners with the Louisiana Endowment for the Humanities in New Orleans, a venue with additional works on display by John T. Scott.

The LSU Museum of Art would like to thank Turry Flucker and Cheryl McKay Dixon. Their appreciation, respect, and support nourished and generated ideas that gave rise to *Beyond Black*. The Museum would also like to thank Louisiana State University interns Jeremy Kreusch and Ellen Ogden, who assisted with the research for this exhibition.

We would also like to acknowledge AT&T Louisiana, Chuck Schwing, John Turner and Jerry Fischer for their generous contribution in support of *Beyond Black*.



ABOVE: JOHN T. SCOTT (American, 1940-2007), *Dancing at the Crossroads*, 1996. Painted steel. On loan from Arthur Roger Gallery. **OPPOSITE PAGE LEFT TO RIGHT: JOHN T. SCOTT** (American, 1940-2007), *Ethiopian Graffiti no. 4*, unknown date. Mixed media on panel. On loan from Arthur Roger Gallery. **ED CLARK** (American, b. 1926), *The Wave*, 2006. Acrylic on canvas. Courtesy of G.R. N'Namdi Gallery.

BOTTOM: ED CLARK (American, b. 1926), *Mexican Series, no. 10*, 2001. Acrylic on canvas. Courtesy of Peg Alston/Peg Alston Fine Arts. **EUGENE MARTIN** (American, 1938-2005), *Untitled*, unknown date. Conte on board. Gift of Suzanne Fredericq in memory of Eugene Martin. Artists Rights Society; Suzanne Fredericq. ©

Future Exhibitions

The 10th International Shoebox Sculpture Exhibition

Organized by the University of Hawaii Art Gallery
May 29 – July 10, 2011

The 10th International Shoebox Sculpture Exhibition gathers a large number of well-known artists from Hawaii, the U.S. mainland, Australia, Canada, Chile, China, Finland, France, Germany, Hungary, Japan, Korea, Norway, Taiwan, the Netherlands, and the United Kingdom. Inspiring and thought-provoking, the works represent a full range—from political and social commentary to humor, from personal narrative to enigmatic statements, and from realism to abstraction. These sculptures demonstrate the imaginative spirit and the endless creativity of the artist.

Also at the Shaw Center for the Arts

Alfred C. Glassell Jr.
Exhibition Gallery,
Shaw Center for the Arts
First Floor

For more info contact Malia Krolak,
gallery coordinator for the LSU School of Art,
at 225-389-7180; artgallery@lsu.edu.

MFA Thesis Exhibitions

May Babcock
April 5-9
Reception: Saturday, April 9, 6-8pm

Adrienne Lynch
April 12-16
Reception: Saturday, April 16, 6-8pm

Andrew Gilliatt and Katie Knoeringer
April 26-30
Reception: Saturday, April 30, 6-8pm

Allison Regan and Kyle Bauer
May 3-7
Reception: Saturday, May 7, 6-8pm

Shannon Kolvitz and Kelly Tate
May 10-14
Reception: Saturday, May 14, 6-8pm

Kitty Pheny
May 17-21
Reception: Saturday, May 21, 6-8pm

Gallery Changes

A walk through the LSU Museum of Art's permanent collection galleries provides an artistic journey through time and across continents. Over the past several months, the Museum has been busily rotating artwork from our nearly 5000-work collection in order to provide visitors with the opportunity to view some of this area's most incredible works of art.

Galleries at the LSU Museum of Art include artwork by current and former LSU faculty and graduate students; early European and American portraiture, landscapes, and furniture; intricately carved Chinese jade; modern and contemporary paintings and sculpture; early and contemporary European and American decorative art; and photography.

You don't need to travel to another city to see incredible art! With local favorites such as Kathryn Hunter, Edward Pramuk, and Ed Smith or internationally recognized artists such as Rembrandt Peale, Louis Comfort Tiffany, Pierre-Auguste Renoir, and Thomas Hart Benton on display, the LSU Museum of Art provides a spectacular and spacious space virtually in your own backyard, where you can admire and discover the world of art.

The LSU Museum of Art has also recently redesigned our Idea Box gallery. Set amongst the permanent collection galleries, this space is devoted to educational and hands-on activities. The Idea Box is a learning center where children and adults alike can make connections between art and personal experience. Within this space, visitors can design their own Newcomb Pottery, create their own landscape, or leave a suggestion for the curator. Create your own art and experience the depths of your artistic imagination.

New Orleans Silver on the Move

Going to be in Columbus, Georgia this spring? Be sure to check out the exhibition *Precious Metals: Southern Silver*, on display at The Columbus Museum February 19th – June 26th. This exhibition features examples of New Orleans coin silver from the collection of the LSU Museum of Art, which holds the largest public collection of New Orleans-made silverware.

Most of these pieces date from the late 18th to mid-19th centuries, when New Orleans was an important center for American silversmithing that provided fine works in silver to the prosperous inhabitants of Louisiana and the Lower Mississippi Valley.

OPPOSITE PAGE LEFT TO RIGHT: ADOLPHE HIMMEL (German-American, 1826-77) for Hyde and Goodrich, New Orleans, Lidded soup tureen, c. 1854, coin silver, Gift of Dr. A. Brooks Cronan and Diana Cronan, 78.2.1. Photograph by David Humphreys. **ADOLPHE HIMMEL** (German-American, 1826-77) and Christopf Christian Küchler (German-American, active in New Orleans 1852-70) for Hyde and Goodrich, New Orleans, Egg boiler, c. 1852-53, coin silver, Gift of the Friends of LSU Museum of Art, 84.31.1a-d. Photograph by David Humphreys.

Volunteer Opportunities at LSU Museum of Art

The LSU Museum of Art depends on volunteers. Opportunities are available to serve as docents, museum-store clerks and gallery attendants. You can assist with research, exhibition installation, public relations, events, and general office work. Consider volunteering your time. For more information, contact LeAnn Russo at 225-389-7211; lrusso@lsu.edu.

Volunteer Profile Keenan Torrence

What made you want to volunteer at the museum?

I have always been interested in art, and two summers ago my Dad told me about a commercial he heard on the radio advertising the job. I think I contacted Ms. Lara the next day.

Are you involved in any other volunteer work?

Well, I am a member of Baton Rouge High's Invisible Children Club, but I wish I did more.

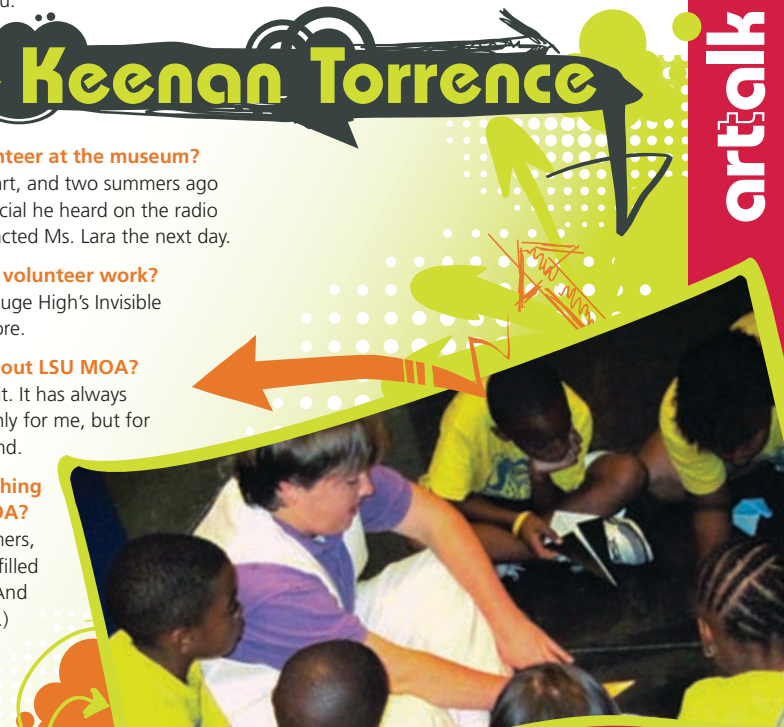
What is your favorite thing about LSU MOA?

Oh I really love everything about it. It has always been a great environment, not only for me, but for everyone that I have shown around.

What has been your favorite thing about volunteering at LSU MOA?

It has given me two GREAT summers, that would have otherwise been filled with boredom and melancholy. (And shenanigans, lots of shenanigans.) The memories are all wonderful.

Keenan attends Baton Rouge Magnet High School.



Be the first to know about upcoming events and exhibitions, meet new people, and find other great networks! Follow the LSU Museum of Art on Facebook, Twitter, and YouTube.



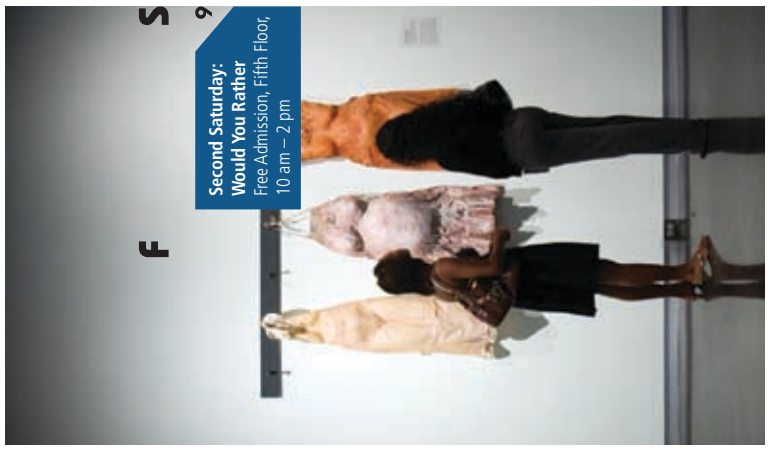
3				
4				
5	Closed for Mardi Gras Parade			
6				
7				
8				
9				
10				
11				
12	Second Saturdays: March Memory Madness Free Admission, Fifth Floor, 10 am – 2 pm			
13				
14				
15				
16				
17				
18				
19				
20				
21				
22				
23				
24				
25				
26				
27				
28				
29				
30				
31				



MARCH

APRIL

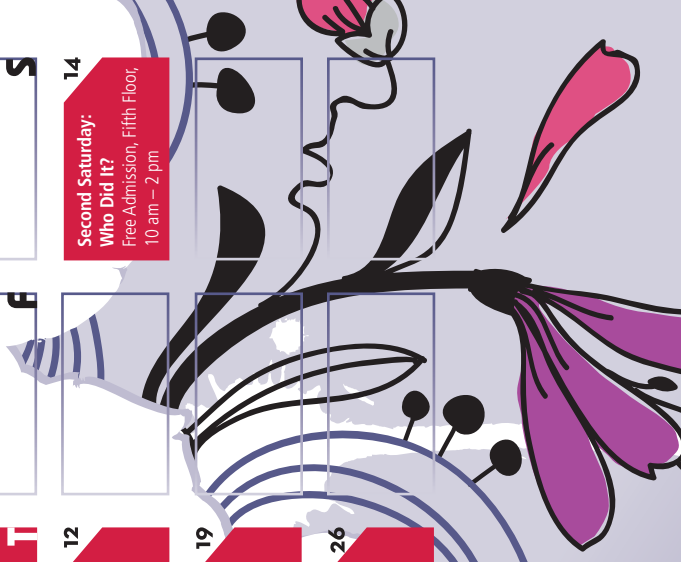
1				
2				
3	Free First Sunday Free Admission, Fifth Floor			
4	Museum Closed			
5				
6				
7	Open until 8pm LSU Night at the Museum: Game Night Free admission with current LSU ID, 6:30 pm – 8:30 pm, Fifth Floor			
8				
9				
10				
11	Museum Closed			
12				
13				
14	Open until 8pm Endowment Society April Event See p. 3 for more information			
15				
16				
17				
18	Museum Closed			
19				
20				
21	Open until 8pm			
22				
23				
24	Closed for Easter			
25	Museum Closed			
26				
27				
28	Open until 8pm			
29				
30				
31				



1	Free First Sunday Free Admission, Fifth Floor			
2	Museum Closed			
3				
4				
5	Open until 8pm			
6				
7				
8	Last Day to see Beyond Black Fifth Floor, 1-5 pm			
9	Museum Closed			
10				
11				
12	Open until 8pm			
13				
14	Second Saturday: Who Did It? Free Admission, Fifth Floor, 10 am – 2 pm			
15				
16	Museum Closed			
17				
18				
19	Open until 8pm			
20				
21				
22				
23	Museum Closed			
24				
25				
26	Open until 8pm			
27				
28				
29	10th International Shoebox Sculpture Exhibition Opens to the public Fifth Floor, 1-5 pm			
30	Museum Closed			
31				



MAY



Events

MARCH

5 Closed for Mardi Gras Parade

6 Free First Sunday Free Admission, Fifth Floor

12 Second Saturday: March Memory Madness Free Admission, Fifth Floor, 10 am – 2 pm How good is your memory? Can you remember how many? How big? What color? Test your memory throughout the galleries – and don't let it drive you mad. *Bring a "Take-and-Make" bag home to create your own artwork inspired by your museum visit. Supplies are limited and available on a first-come, first-served basis. Children must be accompanied by an adult who is prepared to provide assistance. Groups of 10 or more who would like to participate in the Second Saturday's programs are encouraged to email education curator, Lara Gautreau at lgaut@lsu.edu.* This program is made possible through support from Ms. Marjorie Childs.



27 Beyond Black: a Panel Discussion Free Admission for LSU MOA Members, all others free with Museum Admission, Fifth Floor, 2 pm Arts professionals from a variety of disciplines will discuss their thoughts on working within and "beyond" the African American tradition in each of those disciplines. Have these disciplines developed, retained, and/or moved beyond a "black" tradition? How does living and working in the South impact on those traditions? Derek Gordon, CEO for the Arts Council of Greater Baton Rouge, will mediate. Panelists include: musician John Gray, visual artist Clifton Webb, performance poet Chancellor "xero" Skidmore, and the Director of New Venture Theater, Greg Williams, Jr.

APRIL

2 Free First Sunday Free Admission, Fifth Floor

7 LSU Game Night Free admission with current LSU ID, 6:30 pm – 8:30 pm, Fifth Floor An LSU Game Night with all of the fun and none of the tackles – unless Twister gets a little out-of-hand. If contortion isn't your idea of fun, try your hand at Pictionary, flex your memory at Art Trivia, show off your spelling skills in the Bee, or just enjoy hanging out with your friends (and the art, of course).

9 Second Saturday: Would You Rather Free Admission, Fifth Floor, 10am – 2pm Which carriage ride would you rather, on Thomas Hart Benton's or Clarence Millet's? Would you rather go to a party given by Governor John Stone or Countess Maria Walpole? This popular game gets a fun museum twist as you consider the artworks in a whole new

light. *Bring a "Take-and-Make" bag home to create your own artwork inspired by your museum visit. Supplies are limited and available on a first-come, first-served basis. Children must be accompanied by an adult who is prepared to provide assistance. Groups of 10 or more who would like to participate in the Second Saturday's programs are encouraged to email education curator, Lara Gautreau at lgaut@lsu.edu.* This program is made possible through support from Ms. Marjorie Childs.



14 Endowment Society Event See page 3 for more details 'New Acquisitions' party for Endowment Society Members to help those additions to our permanent collection. Don't miss the fun.

MAY

1 Free First Sunday Free Admission, Fifth Floor

3-8 Mother's Day Sale in Museum Store Show mom how special she is with a one-of-a-kind, unique gift item. Selections include handmade jewelry, blown glass, artwork, books, and more. Receive 25% off one item of your choice. Memberships make great gifts too.

8 Last Day to see Beyond Black Fifth Floor, 1–5pm

14 Second Saturday: Who Did It? Free Admission, Fifth Floor, 10am – 2pm Artists have different subjects, different ways of painting or sculpting, and different styles. When faced with a gallery of artworks, can you figure out who did what? Come see if you can match two artworks – one in our galleries and one that isn't – to figure out "Who Did It?" *Bring a "Take-and-Make" bag home to create your own artwork inspired by your museum visit. Supplies are limited and available on a first-come, first-served basis. Children must be accompanied by an adult who is prepared to provide assistance. Groups of 10 or more who would like to participate in the Second Saturday's programs are encouraged to email education curator, Lara Gautreau at lgaut@lsu.edu.* This program is made possible through support from Ms. Marjorie Childs.



29 10th International Shoebox Sculpture Exhibition opens to the public Fifth Floor, 1–5pm This exhibition brings together a large number of well-known artists from around the country. See the intimacy of the small scale works which demonstrate the imaginative spirit and the endless creativity of the artist.

Art in Action



Planning a Special Event

Looking for a refined and elegant venue to host your next special event?

Whether your event calls for a standing reception or a seated dinner, the LSU Museum of Art can accommodate your entertainment needs with beauty and sophistication.

LSU Museum of Art members receive a 20% discount on all rentals.

For more information, please visit our website at www.lsumoa.com. For a tour of our facilities and help coordinating your event, please contact Renee B. Payton at 225-389-7206; renee@lsu.edu.



MOA News



LSU Museum of Art bids farewell to Erika Katayama

In December, the staff of the LSU Museum of Art bid a fond farewell to our colleague Erika Katayama. Erika began working at the museum as a curatorial intern in 2008, when she curated the photography exhibition *Through the Lens: Selections from the Museum Vault*. After receiving her M.A. in Art History from LSU, Erika became the museum's registrar and coordinated arrangements for several exhibitions, including *Rodin: A Magnificent Obsession*, *Caroline Durieux: A Radioactive Wit*, and *Beyond Black: Ed Clark, Eugene Martin and John T. Scott*. "Erika has been an invaluable addition to the staff of the Museum of Art and will be sorely missed," remarked Executive Director Tom Livesay. The staff of the museum wishes Erika the very best in her new position as registrar at the Oklahoma City Museum of Art.

Summer Teen Volunteer Program: Training

The LSU Museum of Art's galleries will soon be filled with summer campers from throughout our community. For most of these kids, this is their first time to visit an art museum, and the Museum can't provide this experience without help. Do you or a teen you know want to be a part of making a camper's visit one they will never forget? Teens who volunteer will attend a week of training, practicing leading game-based tours, invent some games of their own, and even building some of the gallery game parts. From puzzles to searches, bingo to riddles, this summer is one the teens won't soon forget!

Teens must be:

- fourteen or older
- able to attend the full five days of training, June 1, 2, 3, 6, and 7, 10 am – 4 pm
- able to volunteer one day per week for a majority of the summer
- comfortable speaking to groups
- able to provide own transportation and lunch

If you or someone you know is interested, please contact education curator, Lara Gautreau at lgaut@lsu.edu; 225-389-7207.

WELCOME NEW MEMBERS

Houston Aaron & Abigail Hamilton	Aimee & Charles Daigle	Mr. & Mrs. John Hill	Jessica Purnell
Andrew Bardin	Charlotte & Bob Daigrepont	Missy Crews Howard	Emilie Purnell
Kasey Benesch	Janis Eck	Toni & Ward James	Krystal Purnell
Mary Ann Coleman	Michael & Amy Ferachi	Allen F. C. Joseph	Dr. & Mrs. Joel Safer
Mr. & Mrs. William T. Conger	Mr. & Mrs. Edwin M. Hackenberg	K-FX2, Inc.	Dr. & Mrs. Roger F. Shaw III
Beth & Bob Courtney	Scarlet & Tom Hebert	Ann Keogh	Demetrix P. Tolliver
Patrick Craven		Keith Kimble	Gang Zhou
		Melissa Mosby	

To find out more information on how to become a member of LSU MOA, contact Melissa Daly at 225-389-7212 or mdaly2@lsu.edu.

Thank You

LSU MOA Corporate Members

ABMB Engineers, Inc.
Taylor Clark Gallery

Beyond Black Exhibition Sponsor

AT&T Louisiana
Charles E. Schwing

Beyond Black Reception Sponsor

White Oak Plantation – John Folse

LSU Art Past and Present Sponsors

Michael Robinson & Donald Boutté

Second Saturdays Sponsor

Ms. Marjorie Childs

Donations to Exhibition Fund

Newton B. Thomas Family Fund
Julia Aycok
Howard Bagley
Mr. & Mrs. John Bateman
Ned and Laura Clark
Judy Cooper
Betty Crawford
Rev. Jamin Scott David
Sally Fowler
Jim and Judi George
Kelli and Bill Kelley
Tonya LeSage
Andre Moreau
Lumina Newchurch

Honorary Donations

In Honor of Fr. Howard Hall
Mike & Wendy Herschman
In Honor of Barbara Zellmer
Gabriella & Marshall St. Amant

Memorial Donations

In Memory of Jerry Schwingr
Mrs. William Palfrey
In Memory of Michael Crespo
Michael D. Robinson & Donald J. Boutté
In Memory of Anne Stout
Michael D. Robinson & Donald J. Boutté
In Memory of Susan Zucker
Michael D. Robinson & Donald J. Boutté

Donations to Development Fund

Stephen Black
Catherine Stephens

Donations to Program Endowment

Estate of Mary Chauvin Wurzlou

Newsletter and Design Sponsor

Stun Design and Advertising

Corporate Member & Sponsorship Opportunities

Raise your corporate profile by sponsoring the LSU Museum of Art, or by becoming a Corporate Member.

For more information contact
Melissa Daly at
225-389-7212; mdaly2@lsu.edu.



LSU MOA Support Fund

PLEASE PRINT

I AM ENCLOSING MY CONTRIBUTION OF \$ _____ DATE _____

DONOR'S NAME _____

DONOR'S ADDRESS _____

IN HONOR OF _____

IN MEMORY OF _____ IS THIS DEATH RECENT? Yes No

ACKNOWLEDGE TO _____

ADDRESS _____

HOW IS HONOREE/DECEASED RELATED TO YOU? _____

HOW IS HONOREE/DECEASED RELATED TO RECIPIENT OF ACKNOWLEDGEMENT? _____

Payment Options pick one

MY CHECK FOR \$ _____ IS ENCLOSED.
MAKE CHECK PAYABLE TO: THE LSU FOUNDATION.

PLEASE CHARGE \$ _____ TO MY:
 AMERICAN EXPRESS DISCOVER MASTER CARD VISA

ACCOUNT # / EXPIRATION DATE _____

NAME AS IT APPEARS ON CARD _____

SIGNATURE _____

The LSU MOA Support Fund provides a means for giving memorial and special gifts in recognition or remembrance of loved ones and friends. This is a wonderful way to honor someone on a special occasion, for a personal achievement, or for a life milestone. Contributions to the fund can be submitted via the Support Fund Form or by contacting the Development Office at 225-389-7212.

JOIN THE LSU MUSEUM OF ART TODAY!

Annual membership in the LSU Museum of Art provides major support for museum exhibitions, educational programs, and the research, conservation, and expansion of the permanent collection.

All LSU MOA members receive:

- Free admission to the museum,
- The quarterly newsletter ArtTalk,
- Discounts to programs and invitations to special events,
- 20% discount on Museum Store purchases and Museum rental space,
- 15% discount on meals at Capital City Grill for both locations,
- 10% discount on meals at Tsunami, Baton Rouge,
- 10% discount at all Baton Rouge area Community Coffee Houses, and
- Free upsizes on coffee purchases at PJ's Coffee, Shaw Center for the Arts.

MEMBER NAME & TITLE

ADDRESS

EMAIL

PHONE: HOME & WORK

Yes! I would like to join the Young Professionals of the LSU MOA, to help promote art and culture in Baton Rouge. CHECK TO RECEIVE AN EMAIL INVITATION TO OUR NEXT MEETING

Membership Levels

PICK THE MEMBERSHIP LEVEL YOU WANT

- Student \$15
- Individual \$40
- Dual/Family \$60

Special Donor Memberships

- Patron \$100
- Sustaining \$250
- Benefactor \$500
- Endowment Society \$1,000

Corporate Memberships

- Corporate Friend \$2,500
- Corporate Benefactor \$5,000
- Corporate Philanthropist \$10,000

FOR MORE INFORMATION, CONTACT THE MEMBERSHIP OFFICE AT 225-389-7212.

Return form and payment to:
 LSU Museum of Art
 Membership Office
 Shaw Center for the Arts
 100 Lafayette Street
 Baton Rouge, LA 70801

LSU faculty and staff receive a 10% discount on individual through benefactor-level memberships.

* NARM benefit allows members at the Patron level and above to receive reciprocal membership privileges at over 150 museums, gardens and historical sites throughout North America. Please refer to our web site, www.lsumoa.com for a complete listing of participating sites.

LSU MOA Staff

Tom Livesay, Executive Director
 Melissa Daly, Director of Development
 Fran Huber, Assistant Director for Collections Management
 Natalie Mault, Curator
 Lara Gautreau, Education Curator
 Reneé B. Payton, Marketing Director
 Becky Adams, Administrative Coordinator
 Lori Neuenfeldt, Registrar
 Reneé Smith, Preparator
 LeAnn Russo, Museum Store Manager

Board Members

Chair: Emalie Boyce
 Vice Chair: Fran Harvey
 Secretary/Treasurer: Alison Rodrigue
 Marvin Borgmeyer Laura Lindsay
 E. John Bullard Marchita Mauck
 George Clark Jeffery McLain
 Heather Sewell Day Carolyn Nelson
 Cheryl McKay Dixon Gail O'Quin
 Barbara-Anne Eaton Emile Rolfs
 Donna Fraiche Jonathan Ryan
 John Godbee Charles Schwing
 Eugene Groves Barbara Zellmer
 Fr. Howard Hall
 Honorary: Nadine Carter Russell
 Ex-Officio: Tom Livesay
 Emerita: Sue Turner

Friends of LSU Museum of Art Board of Trustees

President: Nedra Sue Davis
 Vice President: Susannah Bing
 Secretary/Treasurer: Robert Bowsher
 Norman Chenevert
 William Jenkins
 Phillip Juban
 Kay Martin

Admission

Adults & Youths 13+: \$5
 University Students with ID: Free
 Children 12 & Under: Free
 Museum Members: Free

Hours

Tues – Sat: 10 am to 4 pm
 Thurs: 10 am to 8 pm
 Sun: 1 pm to 5 pm
 First Sunday of the Month: Free
 Closed Mondays, Thanksgiving Day,
 Christmas Eve, Christmas Day
 and All Major Holidays



LSU Museum of Art Shaw Center for the Arts

100 Lafayette Street
 Baton Rouge, LA 70801
 225-389-7200 (general)
 225-389-7210 (Museum Store)
www.lsumoa.com

Museum Store

LSU MOA Museum Store 100 Lafayette Street, Baton Rouge, LA 70801 225-389-7210

LSU MOA Museum Store Artist A new jewelry designer

mimosa by m.e.

The "m.e." of Mimosa by m.e. is Madeline Ellis, a landscape designer by day and a jewelry-making aficionado by night. Since grade school, Madeline has used metals, ceramics, fabric and glass to create a unique and whimsical aesthetic. She is known regionally for developing an original line of Louisiana-themed pieces, as well as other fun and funky pieces.

The LSU MOA Museum Store houses a broad selection of goods relating to our present exhibitions, as well as a little bit of local flair. Whether you are looking for the latest work by your favorite local artist or a lasting souvenir for the kids, the LSU MOA Museum Store has something to fit your needs.

Please stop by and visit the LSU MOA Museum Store to see mimosa by m.e. works along with dozens more of local Louisiana artists. You can always find that special gift and unique piece of art in the LSU MOA Museum Store, located on the first floor of the Shaw Center for the Art.



DON'T FORGET, members receive a **20%** discount on all purchases.

M
Manship Theatre
Shaw Center
FOR THE ARTS

TO BUY TICKETS

ONLINE
www.manshiptheatre.org
 BY PHONE
 (225) 344-0334



Memberships are more than just FREE admission to the Museum...

- Frequent visits are a chance to see all the gallery changes showcasing the permanent collection.
- Unique gifts (at a discount) can always be found at the LSU Museum Store.
- Have a once-in-a-lifetime chance to meet local and featured artists.
- Be the first to see traveling exhibition.
- You are supporting Baton Rouge's largest fine arts museum and contributing to the growth of downtown.

Renew your membership this year or purchase one as a gift for family and friends.

Experience art... and so much more!

LSU Museum of Art | Shaw Center for the Arts
100 Lafayette St. Baton Rouge, LA 70801
225-389-7200 | www.lsumoa.com